

Items Included in Your Collection Kit

DNA SAMPLE COLLECTION • SALIVA

- 1 – Kit Box
- 1 – Test Request Form (TRF)
- 1 – Saliva Collection Tube*
- 1 – Zip Closure Specimen Bag
- 1 – FedEx Clinical Pak Mailer

If you are missing any of the needed components or have questions about the collection, please call Diagnostic Solutions Laboratory Customer Service Department at 877-485-5336.

* WARNINGS AND PRECAUTIONS

FOR EXTERNAL USE ONLY. DO NOT drink, touch or remove the reagent from the vial.

The DNA/RNA Shield™ reagent can be harmful if ingested and may cause irritation if exposed to the skin and eyes.

Avoid skin and eye contact with the liquid in the tube.

IF SWALLOWED: Call a doctor if you feel unwell. Rinse mouth. **IF IN EYES:** Rinse cautiously with water for several minutes. Remove contact lenses, if present and easy to do. Continue rinsing.

If the contents of the tube contact your skin, wash the affected area with soap and water. Notify your healthcare provider if irritation develops. If the contents of the vial are spilled, use a new collection kit.

DO NOT use if the product is visibly damaged.

This test was designed and manufactured by Diagnostic Solutions Laboratory.

Opus23 Explorer™ is a fully functional version of the well-regarded and widely used Opus23 Pro™ genomic exploration software designed and programmed by Dr. Peter D'Adamo and distributed under license to Diagnostic Solutions Lab (DSL) by Datapunk Bioinformatics LLC for use in the interpretation of genomic raw data produced by the DSL 'Opus' genomic microarray chip.



The results of this test will only be provided to the health-care practitioner who recommended the test. This is not a diagnostic test. It does not diagnose, identify, or confirm the presence or absence of any disease, condition or illness.

BECAUSE YOUR HEALTH IS UNIQUE

THE SCIENCE OF PRECISION MEDICINE

SHIPPING INSTRUCTIONS

Call FedEx at 1-800-463-3339 to Schedule Your Free Pickup

1. When the automated greeting begins say, "Schedule a pickup."
2. When asked if your label has the word "stamp" on it, say, "Yes."
3. Your tracking number can be found on the Return Label.

www.DiagnosticSolutionsLab.com | RESEARCH. TECHNOLOGY. RESULTS.



DNA COLLECTION INSTRUCTIONS

**– FOLLOW INSTRUCTIONS CAREFULLY –
IMPROPER COLLECTION MAY INVALIDATE RESULTS**

NOTE: Please review all instructions and collection kit components before starting your sample collection. **DO NOT** discontinue taking prescription medications unless directed by your physician.

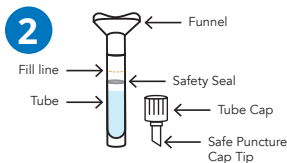
1



IMPORTANT: Refrain from eating, drinking, chewing gum, brushing teeth, or smoking for at least 30 minutes before sample collection.

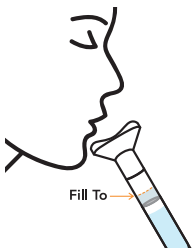
Sample must be received by the lab within 1-week of collection!

2



Carefully remove the collection tube from the packaging and hold the tube vertically with the funnel opening facing up.

3

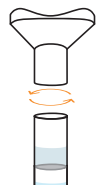


Place the funnel opening under your mouth and spit into the funnel.

Repeat until liquid level (not foam or bubbles) has reached the fill line marked on the collection tube.

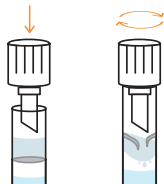
Failure to add sufficient sample may result in the laboratory not being able to process the sample.

4



Carefully remove the funnel from the collection tube and discard funnel.

5



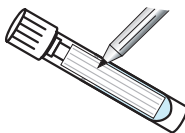
Close the collection tube with the tube cap ensuring that the foil seal is punctured.

6



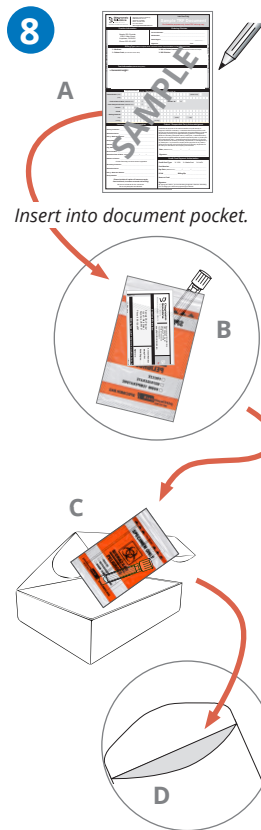
Mix closed collection tube by inversion 10 times.

7



Write name, date of birth, and date of collection on tube label.

8



A) Fill out the Test Request Form completely and place into the document pocket of the specimen bag.

NOTE: Be sure to write the date of sample collection on the form.

Incomplete information in the patient section will result in delayed testing.

Payment type must be completed and payment included to process sample.

B) Place the collected specimen tube into the specimen bag and seal the bag.

C) Place the specimen bag into the kit box.

D) Ship completed kit box back to Diagnostic Solutions Laboratory using the shipping envelope provided.

See important shipping requirements and instructions on the following page.